

THE LANDFILL OPERABLE UNIT OF THE TONAWANDA LANDFILL VICINITY PROPERTY

TONAWANDA, NEW YORK

REMEDIAL ACTION
FORMERLY UTILIZED SITES
REMEDIAL
ACTION PROGRAM

PUBLIC MEETING
MAY 14, 2019



US Army Corps
of Engineers®





OVERVIEW



- Formerly Utilized Site Remedial Action Program (FUSRAP) Cleanup Process
- Site Location & Layout
- Cleanup Activities
- Health & Safety Activities
- Containers & Transport for Off-Site Disposal
- For More Information

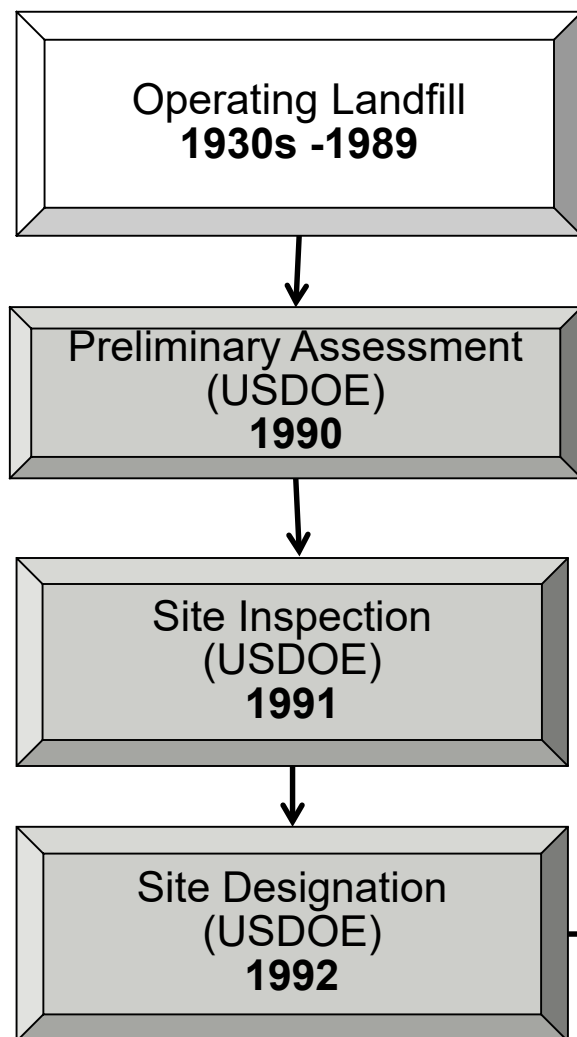


FUSRAP CLEANUP PROCESS

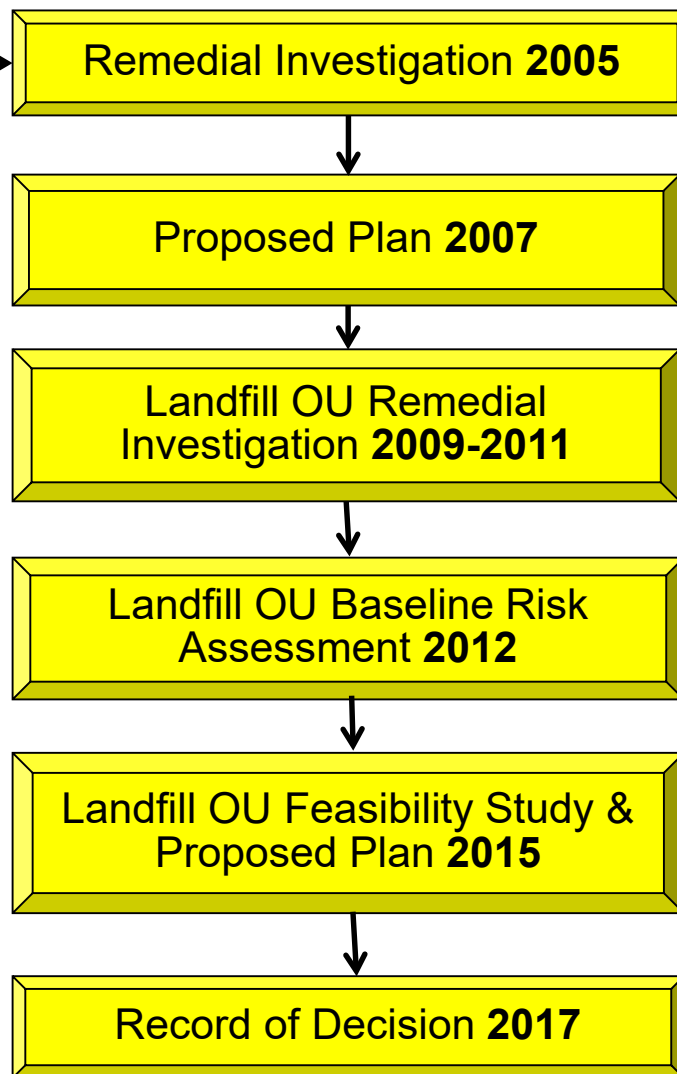


REMEDIAL ACTION PROCESS

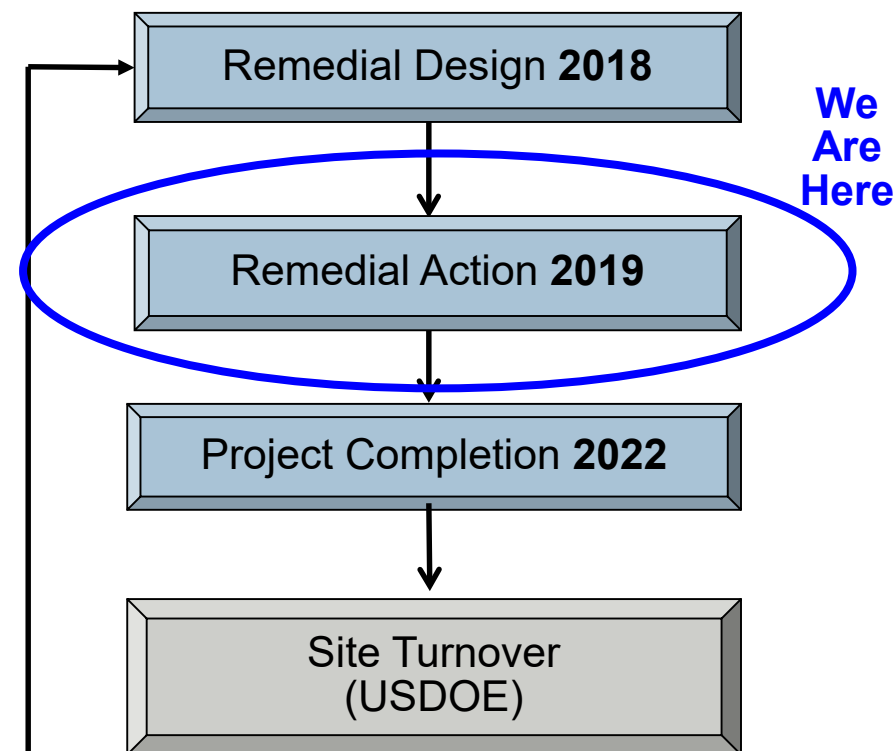
Pre-Investigation Phase



Investigation Phase



Remedial Action Phase

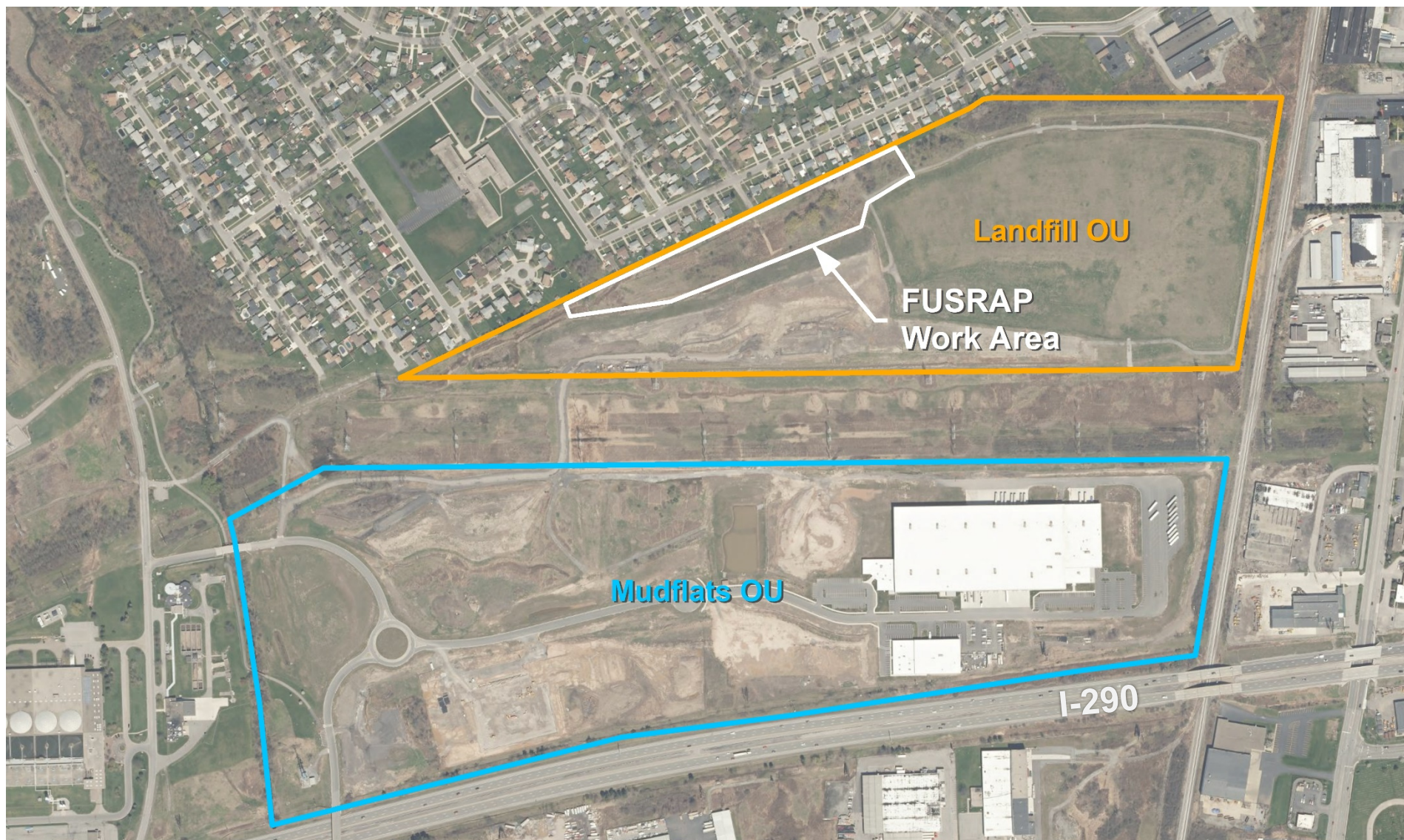


USDOE – U.S. Dept. of Energy
USACE – U.S. Army Corps of Engineers



SITE LOCATION & LAYOUT

TONAWANDA LANDFILL FUSRAP AREAS





FUSRAP CLEANUP AREAS



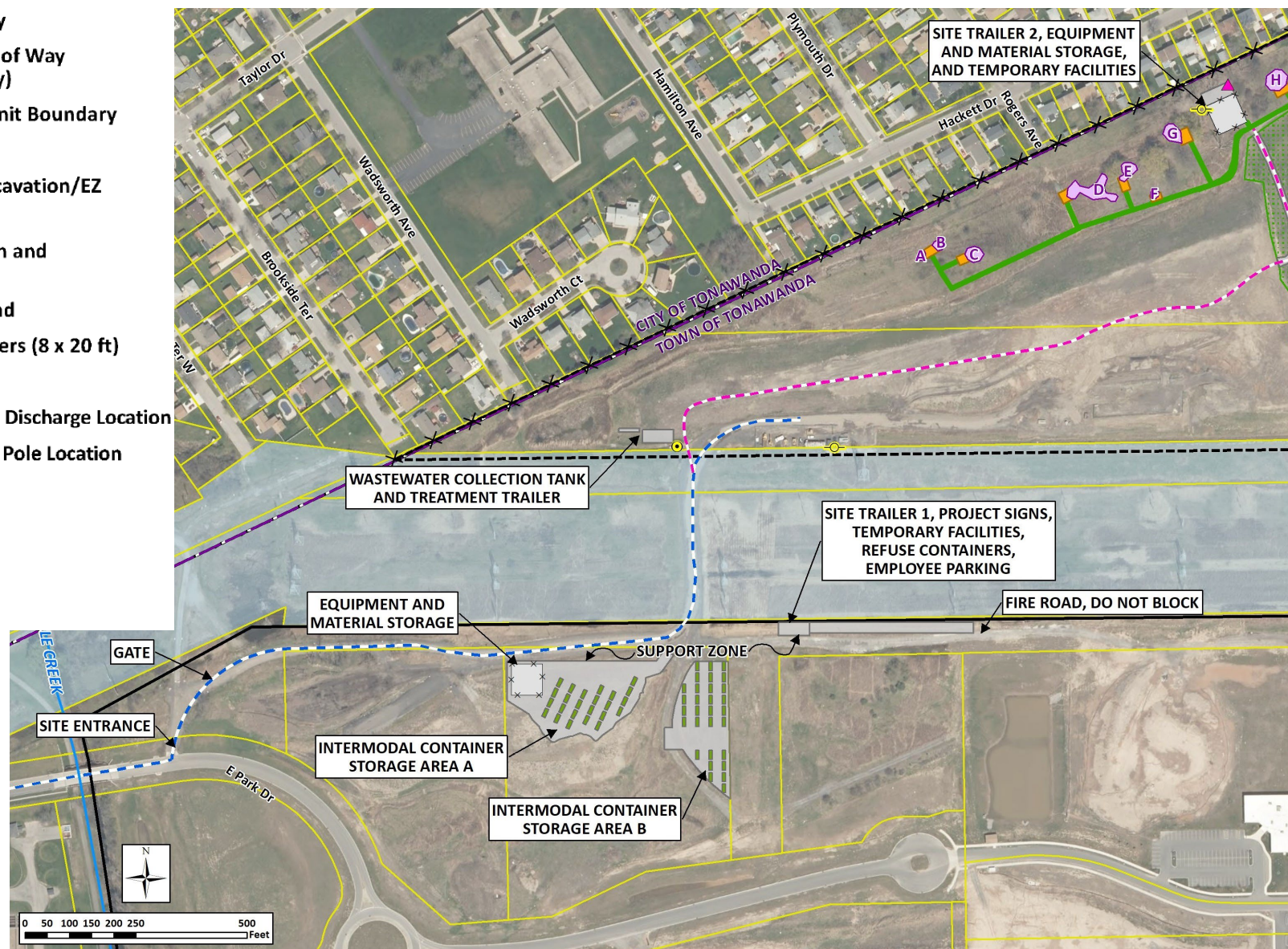


FUSRAP SITE LAYOUT



Map Key:

- Municipal Boundary
- National Grid Right of Way (Drive Through Only)
- Landfill Operable Unit Boundary
- Mudflats Boundary
- Planned Area of Excavation/EZ
- Decon Area/CRZ
- Equipment Laydown and Temporary Fence
- Additional Haul Road
- Intermodal Containers (8 x 20 ft)
- Existing Haul Road
- Approximate POTW Discharge Location
- Approximate Utility Pole Location
- Parcel Boundary
- Capped Area
- Existing Fenceline
- Two Mile Creek





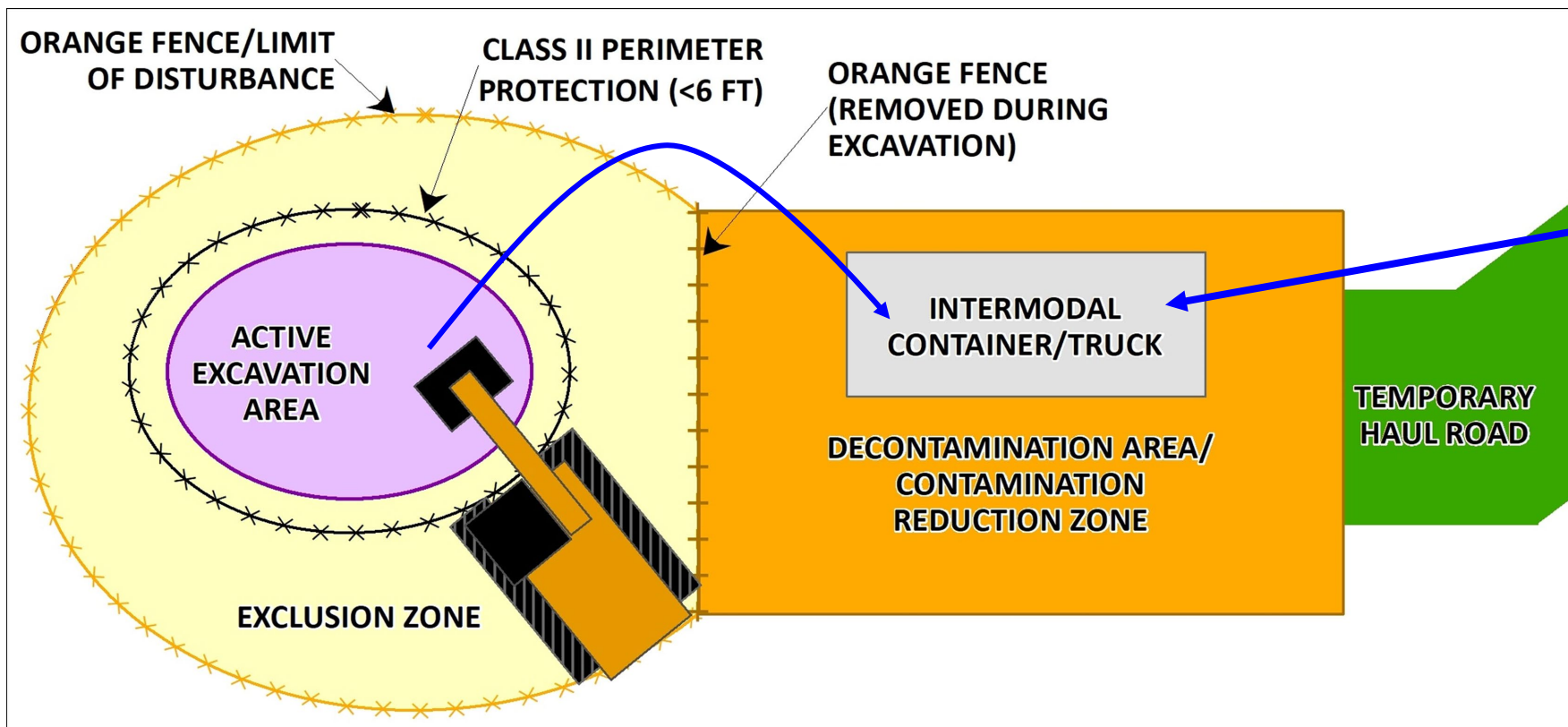
CLEANUP ACTIVITIES

EXCAVATION



Typical construction equipment will be used to remove soil and load it into shipping containers.

EXCAVATION WORK AREAS



Excavators are used to remove soil and load it into shipping containers which are then hauled off-site by truck for disposal. A typical container is shown on the right.



HEALTH & SAFETY ACTIVITIES

DUST SUPPRESSION



Spraying the excavation



Spraying the roads

To prevent dust from moving through the air, excavations and roads will be wetted down with water.

WATER TREATMENT SYSTEM



Water storage tanks and treatment equipment will be used to collect and treat water from the excavations and ensure it is safe to discharge to the town's sanitary sewer system.



EROSION AND SEDIMENT CONTAMINATION CONTROL MEASURES

15



**Silt
Fence**

Silt fences will be used to trap sediments flowing in water that is migrating off the site.

CONTAMINATION CONTROL SURVEYS



Radiation surveys will be continuously completed to ensure contamination is not spread on the site or off the site.

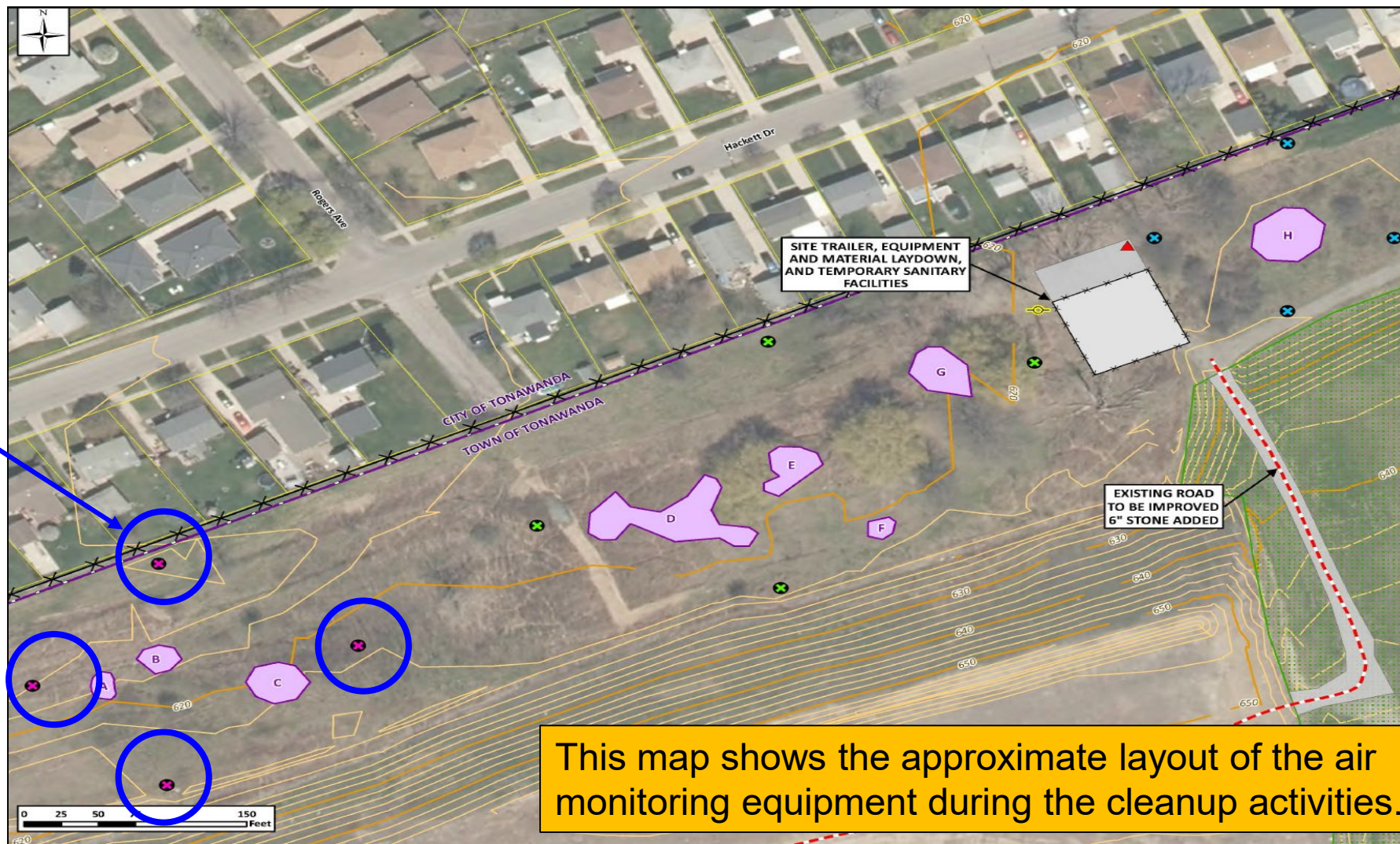
AIR MONITORING



Air monitoring equipment will be used to continuously measure air quality in the work zone and around the perimeter of the site during construction work hours.

APPROXIMATE AIR MONITORING LOCATIONS

Air
Monitors



This map shows the approximate layout of the air monitoring equipment during the cleanup activities.



CONTAINERS AND TRANSPORT FOR OFF-SITE DISPOSAL

CONTAINERS AND TRANSPORT

1. Intermodal containers

- Self-sealing lid
- Size: 8 feet by 20 feet



2. Transport Truck

- Loads intermodal containers and transports them to railroad yard

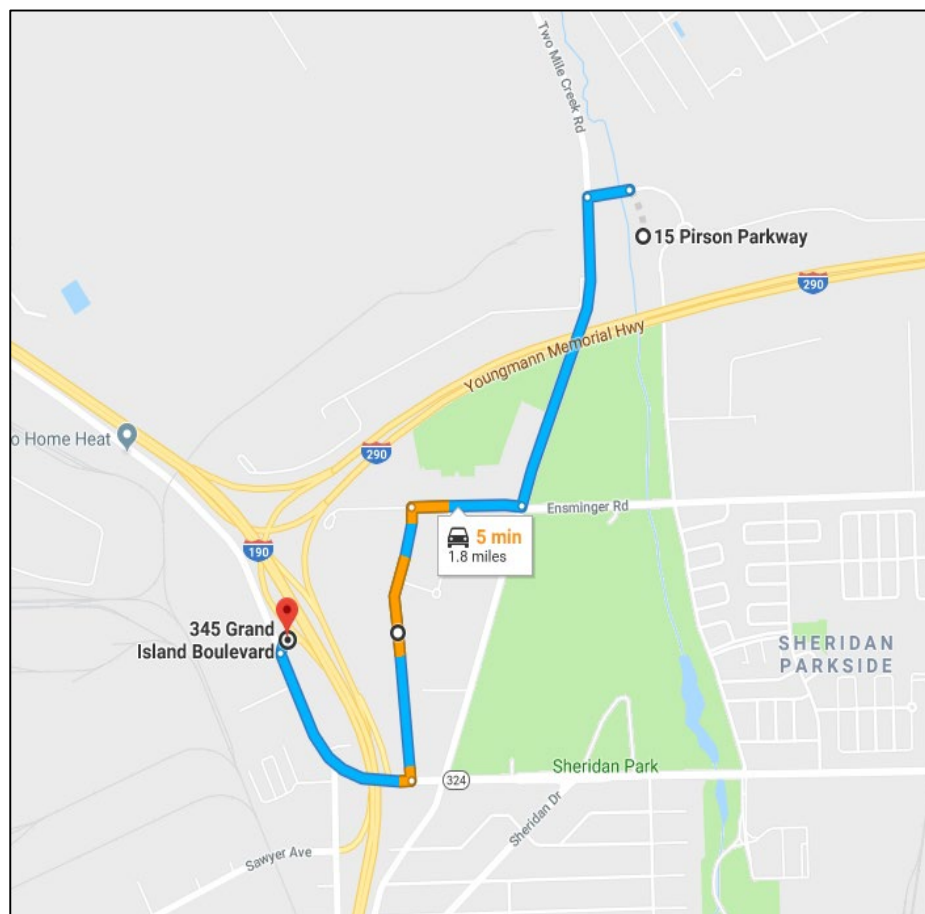


3. Rail Transport

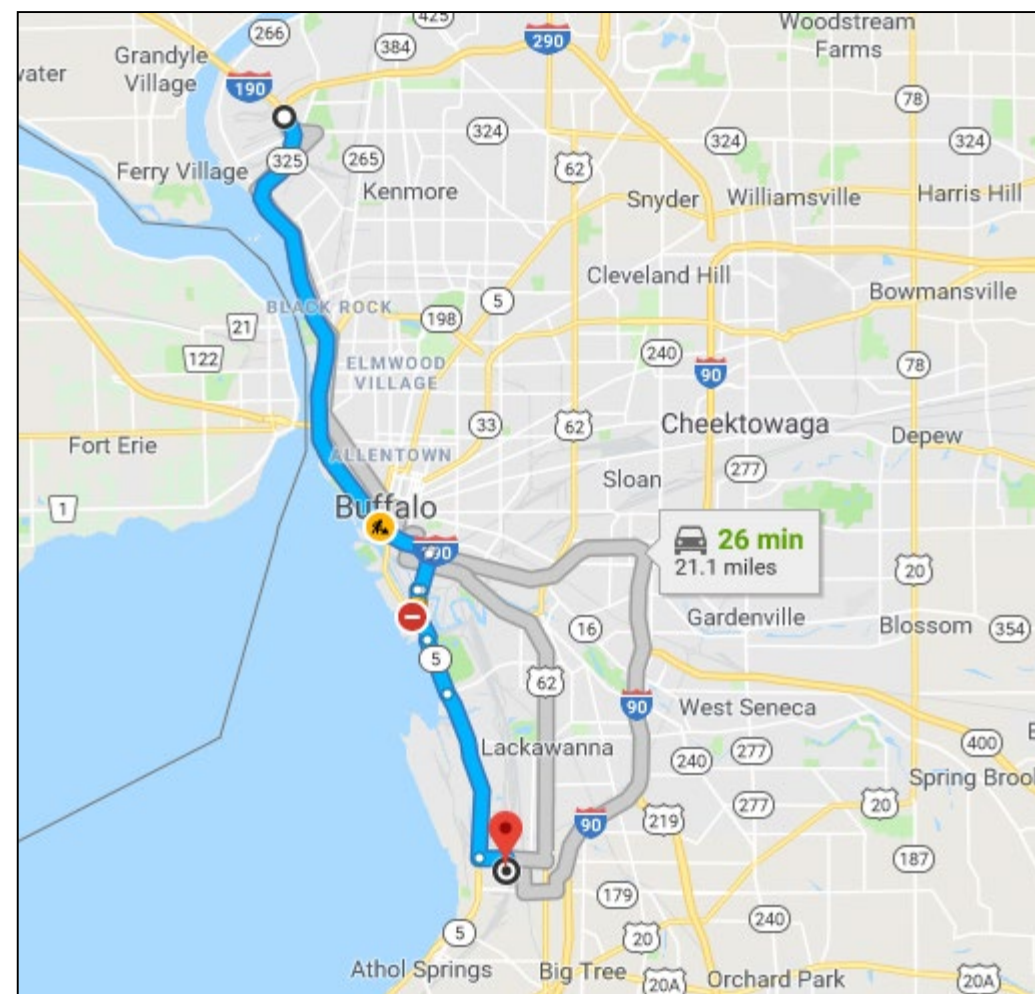
- To US Ecology Landfill, Belleville, Michigan



LOCAL TRANSPORTATION ROUTES



Route from worksite to 190 Thruway

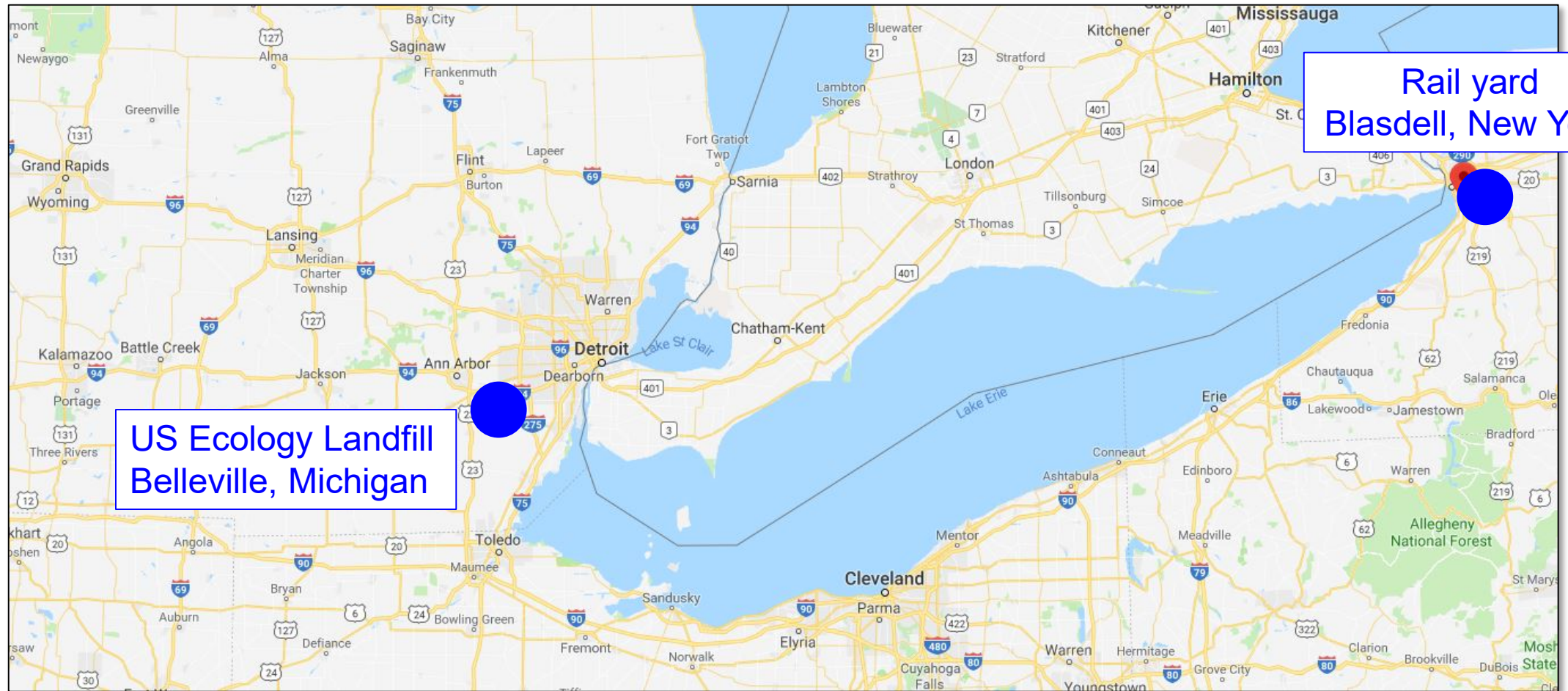


Route to rail yard in Buffalo. Due to active construction the contractor will take the appropriate detours as required.

* Maps are from Google Maps.



OFF-SITE DISPOSAL





FOR MORE INFORMATION



FUSRAP Questions

By phone: 1-800-833-6390 (Option 4)

By e-mail: fusrap@usace.army.mil

By writing: U.S. Army Corps of Engineers, Buffalo District
Special Projects Branch
Environmental Project Management Team
1776 Niagara Street
Buffalo, NY 14207

On the web:

www.lrb.usace.army.mil/Missions/HTRW/FUSRAP/Tonawanda-Landfill



**Thank You
for
Your Participation**